

GLEN LODDON HOMES

Bendigo's most preferred builder

NEW
DISPLAY
OPEN
NOW



The Strathfield 287

NOW OPEN FOR DISPLAY the Strathfield 287 is *Glen Loddon Homes'* latest display home showcasing the quality and design that *Glen Loddon Homes* is renowned for.

Comprising four large bedrooms, study, three living areas and a massive outdoor entertaining area, the Strathfield 287 easily accommodates a growing family providing individual areas for each member and an open plan living/meals/kitchen where everyone can comfortably come together.

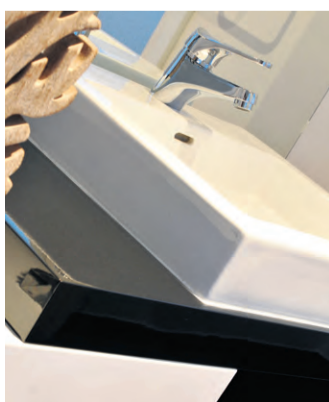
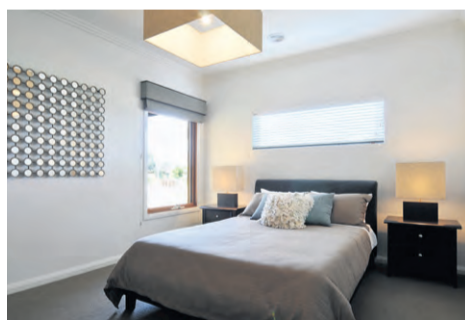
Cleverly incorporated into the Strathfield 287 is a mud room linking the garage to the kitchen, a great space with shelving and hanging space for bags, coats and that pile of shoes that seem to always appear from nowhere.

The kitchen is what everyone dreams about, especially the butler's pantry with a separate sink and large prep area, which also provides direct access to the outdoor area. The corner, glass sliding stack doors allow the inside to become one with the outdoor area giving way to one perfect space for summer living.

Movie night will be a regular event in the theatre/rumpus room which is also home to custom designed storage, carefully crafted by the GLH joinery team. Accessibility is a breeze with wider door ways and a large wheelchair friendly main toilet and powder area.

The Strathfield 287 has too many features to mention them all, so inspect for yourself this Saturday and Sunday between 1 and 4 pm Bendigo's most Preferred Builder, *Glen Loddon Homes*.

**758 STRATHFIELDSAYE ROAD, STRATHFIELDSAYE.
OPEN 7 DAYS 1.00PM - 4.00PM.**



DISPLAY: Open 7 days 1pm-4pm - 758 Strathfieldsaye Road, Strathfieldsaye
OFFICE: Monday-Friday 9am-5.30pm - 53 Wills Street, Bendigo
Ph: 03 5442 8500 Fax: 03 5442 8388
Glenn Wade 0409 962 376 Kellie Aveyard 0407 310 906

www.glenloddon.com.au